



📍 St Andrews Lodge, Apartment 38 16 The Causeway,
Chippenham, Wiltshire, SN15 3HN

🔗 Prices From £352,950

St Andrew's Lodge is a collection of 46 one and two bedroom retirement apartments, walking distance to the town centre shops, and well located for local amenities, and the wealth of beautifully maintained parks in Chippenham.

- 24 Hour Call Centre Support System
- Guest Suite for Friends and Family
- Lodge Manager
- Secure Camera Entry System
- Walk Out Balconies on Selected Apartments
- Energy Efficient and Economical Heating
- Landscaped Gardens with Patio and Seating Areas
- Owners' Lounge with Coffee Bar
- Walk-in Wardrobes
- Walking Distance to Chippenham Town Centre

🏠 Leasehold

🏠 EPC Rating



A beautiful two bedroom apartment set in the heart of Chippenham within a short distance of the town centre and its local amenities. Access via a communal entrance hall with a lift to all floors.

The property enjoys a hallway with camera entry system, spacious living room, a contemporary fitted kitchen with a range of integrated appliances, two double bedrooms, main with a walk-in wardrobe, and a separate cloakroom. The apartment is connected to a 24 hour support system with an on site Lodge Manager during working hours.

A beautifully designed Owners' Lounge with a coffee bar offers the perfect venue for entertaining or just a change of scene. There is also a fully furnished Guest Suite which provides an ideal space for your family and friends to stay.

Externally there are beautifully landscaped gardens maintained for you, giving you the perfect place to relax and enjoy an afternoon cup of tea, without having to worry about the maintenance and upkeep.

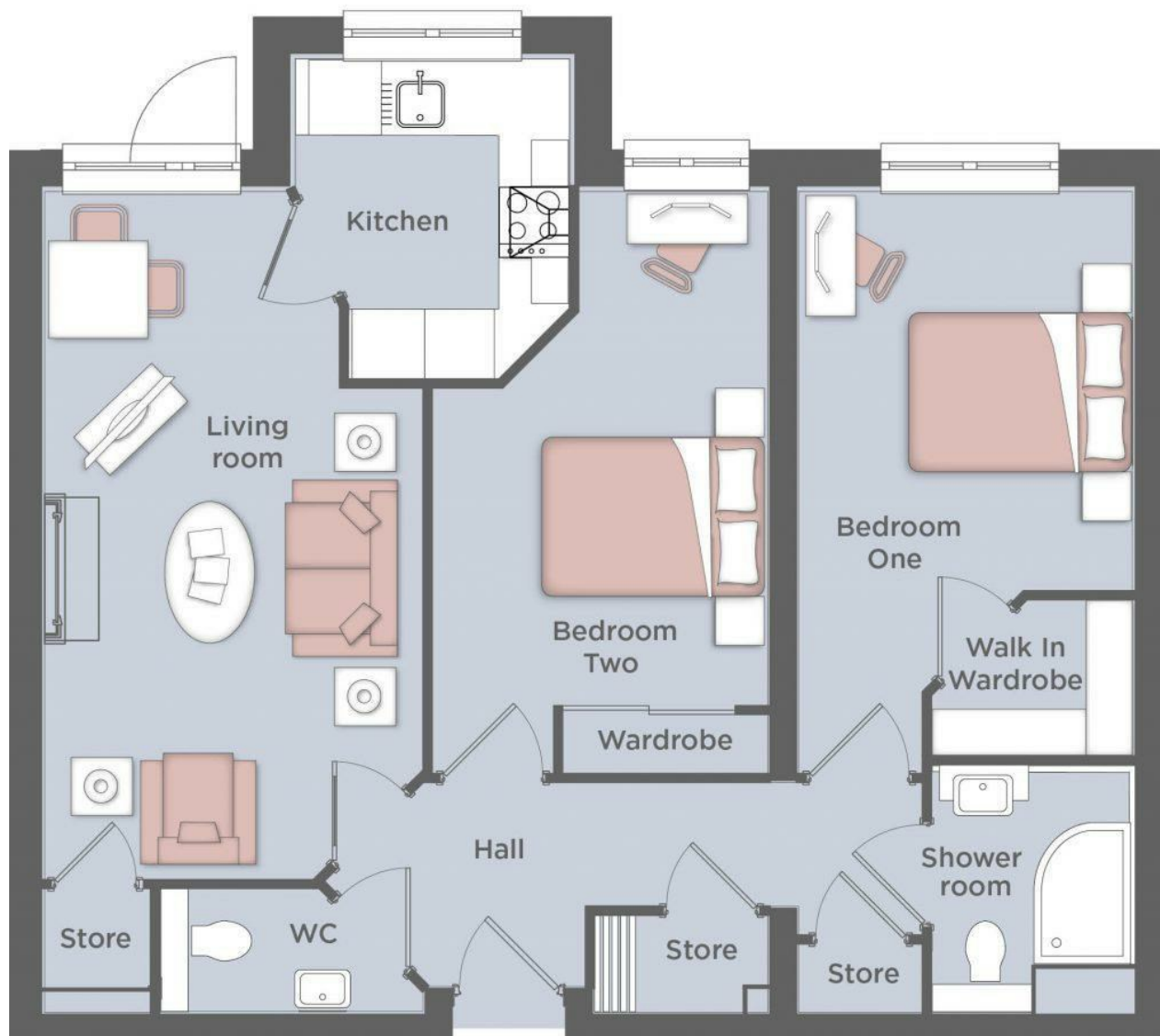
Property Information

Tenure - Leasehold

Lease Information - TBC

Council Tax Band - TBC





Disclaimer These particulars, whilst believed to be accurate are set out as a general outline only for guidance and do not constitute any part of an offer or contract. Intending purchasers should not rely on them as statements of representation of fact, but must satisfy themselves by inspection or otherwise as to their accuracy. No person in this firm's employment has the authority to make or give any representation or warranty in respect of the property. All measurements and distances are approximate only. Your home is at risk if you do not keep up repayments on a mortgage or other loan secured on it.